



19<sup>th</sup> September 2006

## Grain Co-Production Project - 2006 Season Update

We are currently performing Late Post Emergent crop inspections and expect those to be completed by the end of September. Once completed we will send you a more comprehensive investor update. In the meantime we provide the following information regarding the 2006 season crop;

### Rainfall

- The winter rainfall experienced in WA this season (May to August) has been the lowest ever recorded for much of the wheat-belt with the exception of the Esperance region which has experienced average rainfall.
- Over the past two weeks significant rainfall (up to 2 inches) was received over most of the state. This has improved crop prospects for most of the state except the Northern wheat-belt where the rain is not likely to enhance expected yields.
- A mild finish to the season through the remainder of September and in to October is still required to maintain expected yields.

### Wheat Price Outlook.

- The AWB No1 National Pool estimate for APW wheat rose in the last week on the back of dry weather in Australia and Argentina and low world wheat stocks. The current estimate for APW (Australian Premium White) is \$228/t compared to the target price for the 2006 project of \$200/t.
- Dry conditions in other wheat producing regions of Australia are expected to provide further strengthening of domestic wheat prices leading up to harvest.

### Other

- There have been some instances of stripe rust in the WA wheat belt. Stripe rust is a wheat leaf disease and is easily treatable. Where required, contracted crops have been sprayed with a fungicide to minimise the impact of this disease on grain yield and quality.
- In some areas locusts are expected to hatch during the remainder of this month and early October. Contracted Farmers in areas where hatchings are expected are aware of their options to prevent damage to contracted crops.

Australian Agricultural Contracts Ltd ABN 21 080 483 085

Level 2, 41 Walters Drive, Herdsman Business Park WA 6017 || PO Box 1585, Osborne Park WA 6916  
13 000 WHEAT || p:(08) 9244 8599 || f:(08) 9244 7599 || [info@aacl.com.au](mailto:info@aacl.com.au) || [www.aacl.com.au](http://www.aacl.com.au)





## Summary

- Current yield estimates for the Project indicate that the expected tonnage is approximately 73% of the anticipated production. This is well above the expected yield for the state as a whole and is largely due to AACL's risk management strategies.
- Wheat prices are expected to continue rising due to the poor crop conditions in Australia and the rest of the world and due to tight world stocks.
- Rising prices are expected to provide some compensation for a reduction in yields.

The next update is expected to be forwarded to you by week commencing 15<sup>th</sup> October 2006.

Regards

**Macro Funds Ltd / AACL**



A QUICK NOTE

## World Wheat Supply and Demand September 2006

WORLD WHEAT SUPPLY AND DEMAND				
		04/05	05/06	06/07
		MMT		
<b>Supply</b>	<b>Beginning Stocks</b>	132.7	151.4	146.1
	<b>Production</b>	628.9	618.5	596.1
	<b>Supply Total</b>	761.6	769.9	742.2
<b>Trade</b>		111	114.8	110.7
<b>Demand</b>	<b>Food and Seed</b>	503.5	511.8	511.5
	<b>Feed and Residual</b>	106.6	112.4	104.3
	<b>Use Total</b>	610.1	624.2	615.8
	<b>Ending Stocks</b>	151.4	145.7	126.4

### Production

World production down 4% from 05/06.  
Expected Total Production: 596MMT

- Production problems persist in major exporting nations.
- Drought issues in U.S, Argentina and Australia.
- Winterkill problems in the Black sea region.
- Poor finish in E.U.
- U.S production down 17%.
- EU Production down 3%.
- Australia Production down 20%.
- North Africa Production up 21%
- China Production up 14%

## Trade Outlook

### Exports

**Increases on 05/06 season.**

- **Australia, up 0.5MMT.**
- **Canada, up 3.0MMT.**
- **EU, Up 0.5MMT.**
- **Argentina, up 1.0MMT.**

**Decreases on 05/06 Season.**

- **U.S, down 3MMT.**
- **Black Sea, down 4MMT.**

### Imports

**Increases on 05/06 season.**

- **India up 5.7MMT.**

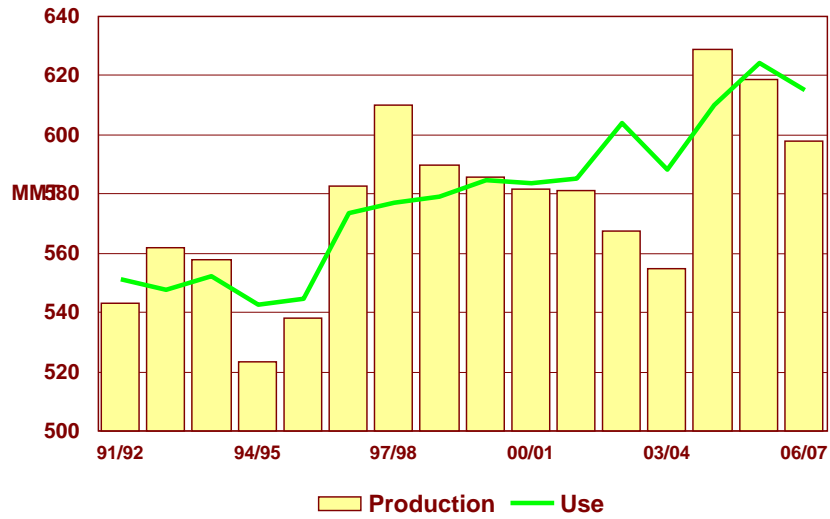
**Decreases on 05/06 season.**

- **North Africa down 2MMT.**

### Consumption Outlook

- **Feed use down 7%.**
- **Food use Stable.**

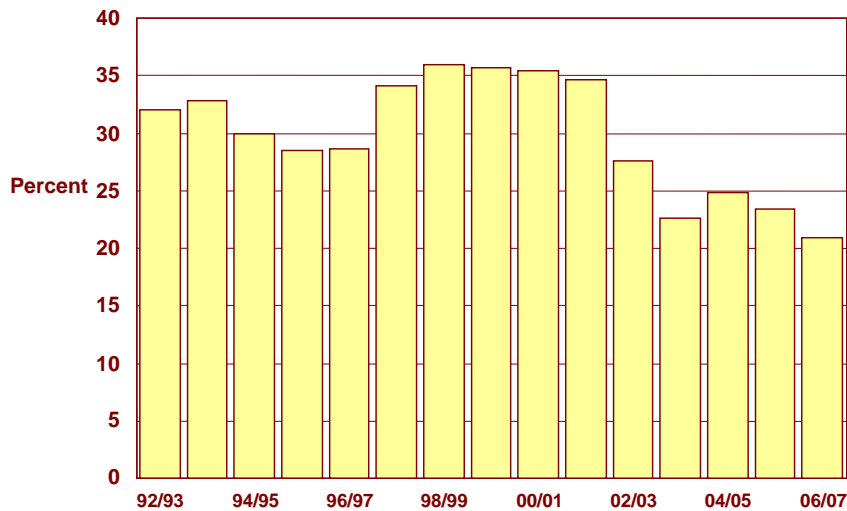
### Production and Use (World)



### Stocks

- World wheat stocks 29% below 10 year average.
- World wheat stocks to use ratio at 21% (record low).

### World Stocks to Use Ratio



## **Summary**

- **World production reduced from 05/06.**
- **World stocks to use at record low.**
- **Hard wheat supplies remain tight.**
- **Soft wheat supplies remain relatively abundant.**
  
- **Export share to move from US and Black sea to Canada, Australia, E.U, and Argentina.**

## **Outlook for SRW**

- **SRW is not well supported fundamentally as production estimates remain high and demand continues to lag.**
- **The potential for prices to stabilize is seen by many in the trade to depend on the emergence of new export demand.**
- **Key resistance level for CBOT Dec 06 contract is being recognized at \$4.25.**
- **The Key support level for the CBOT Dec 06 contract remains \$3.80.**
- **Lower world ending stocks estimates should provide longer term support across the grades.**

**All Supply and demand Data Sourced from USDA.**

**DISCLAIMER:** Grain Pool Pty Ltd ABN 39 089 394 883 (AFS No. 269743) advises that this email may contain general advice which was prepared without taking account of your objectives, financial situation or needs. You should, before acting on the advice, consider the appropriateness of the advice having regard to your objectives, financial situation and needs.